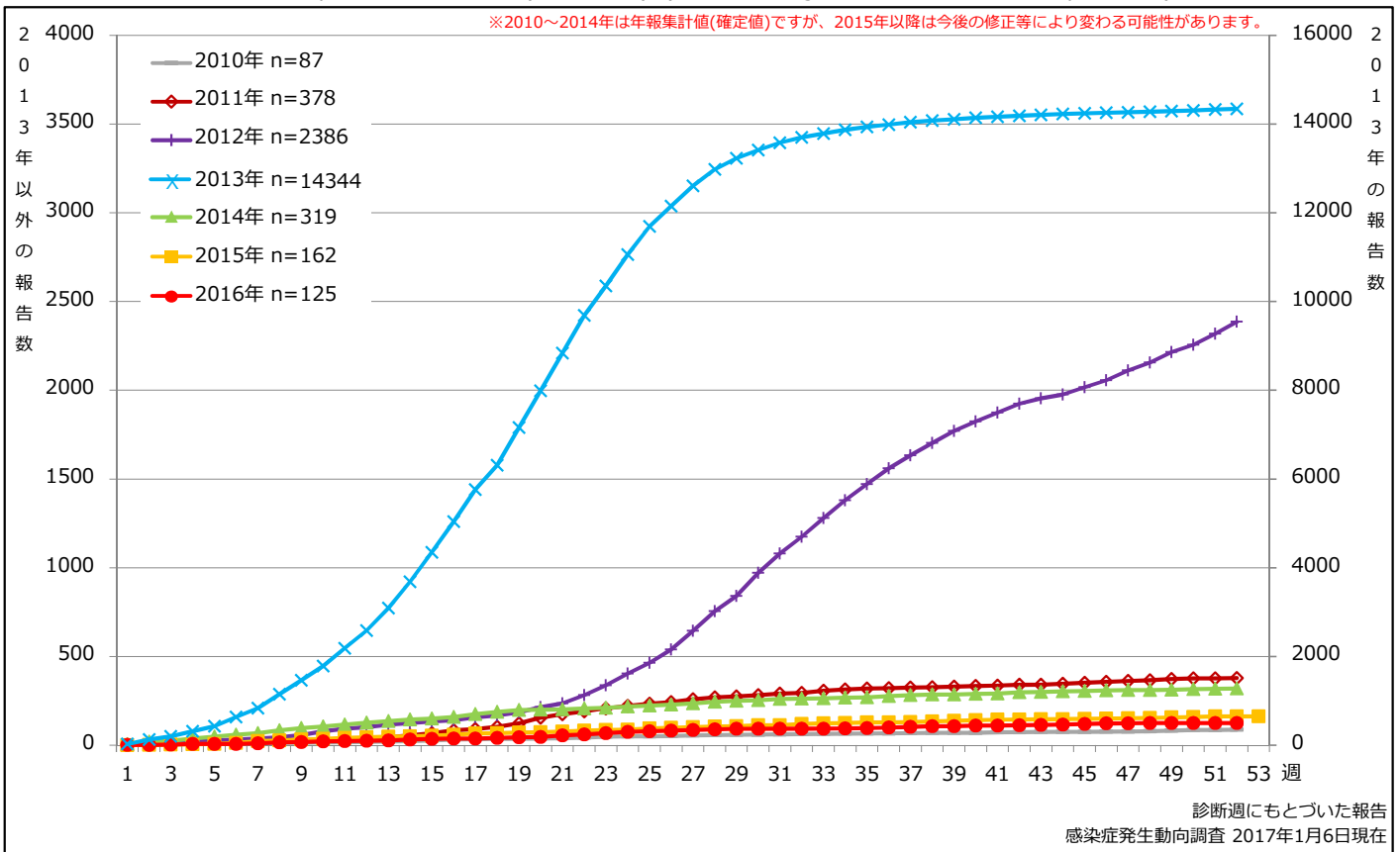


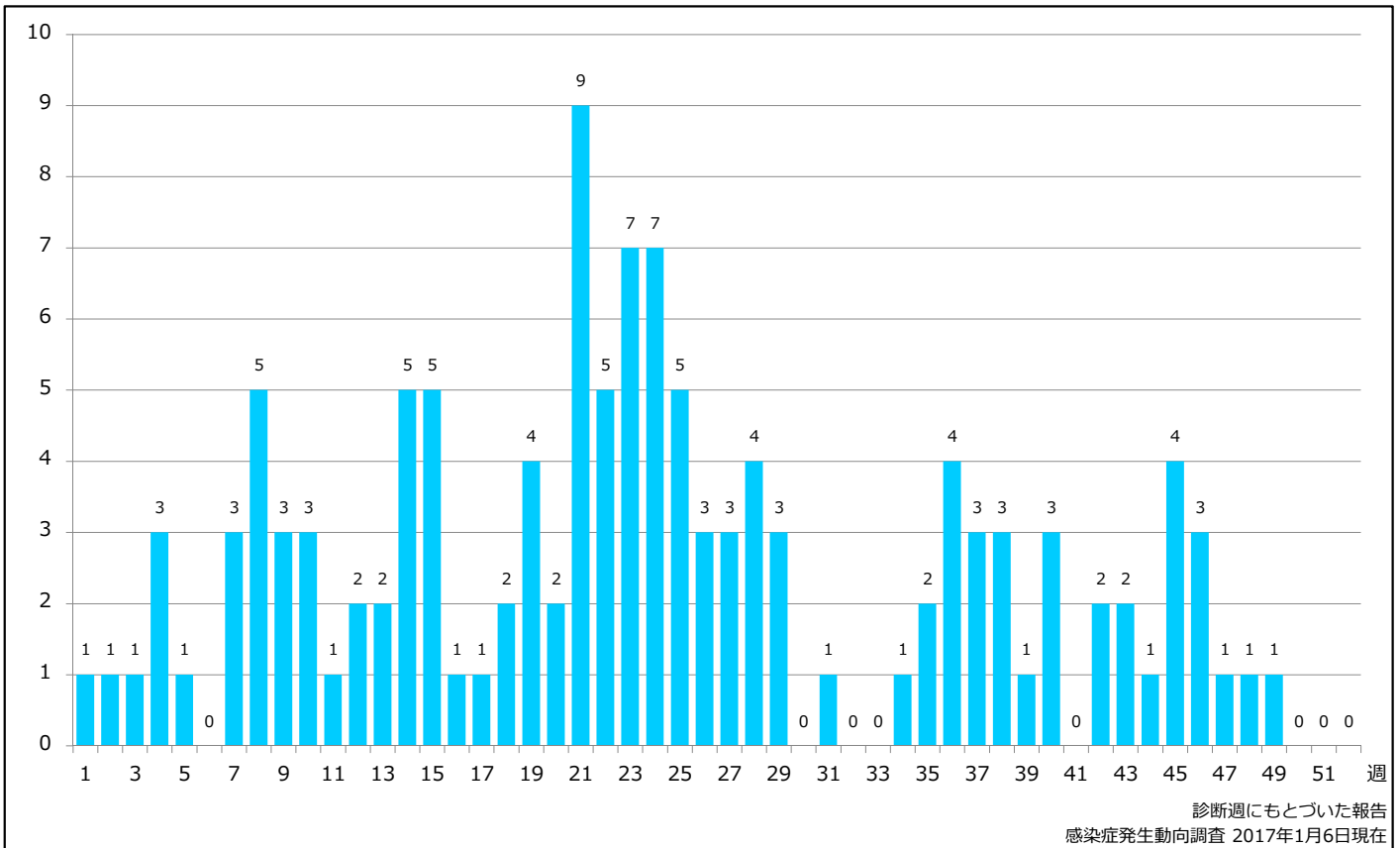
1. 風しん累積報告数の推移 2010~2016年(第1~52週)

Cumulative rubella cases by week, 2010-2016 (week 1-52) (based on diagnosed week as of January 6, 2017)



2. 週別風しん報告数 2016年 第1~52週 (n=125)

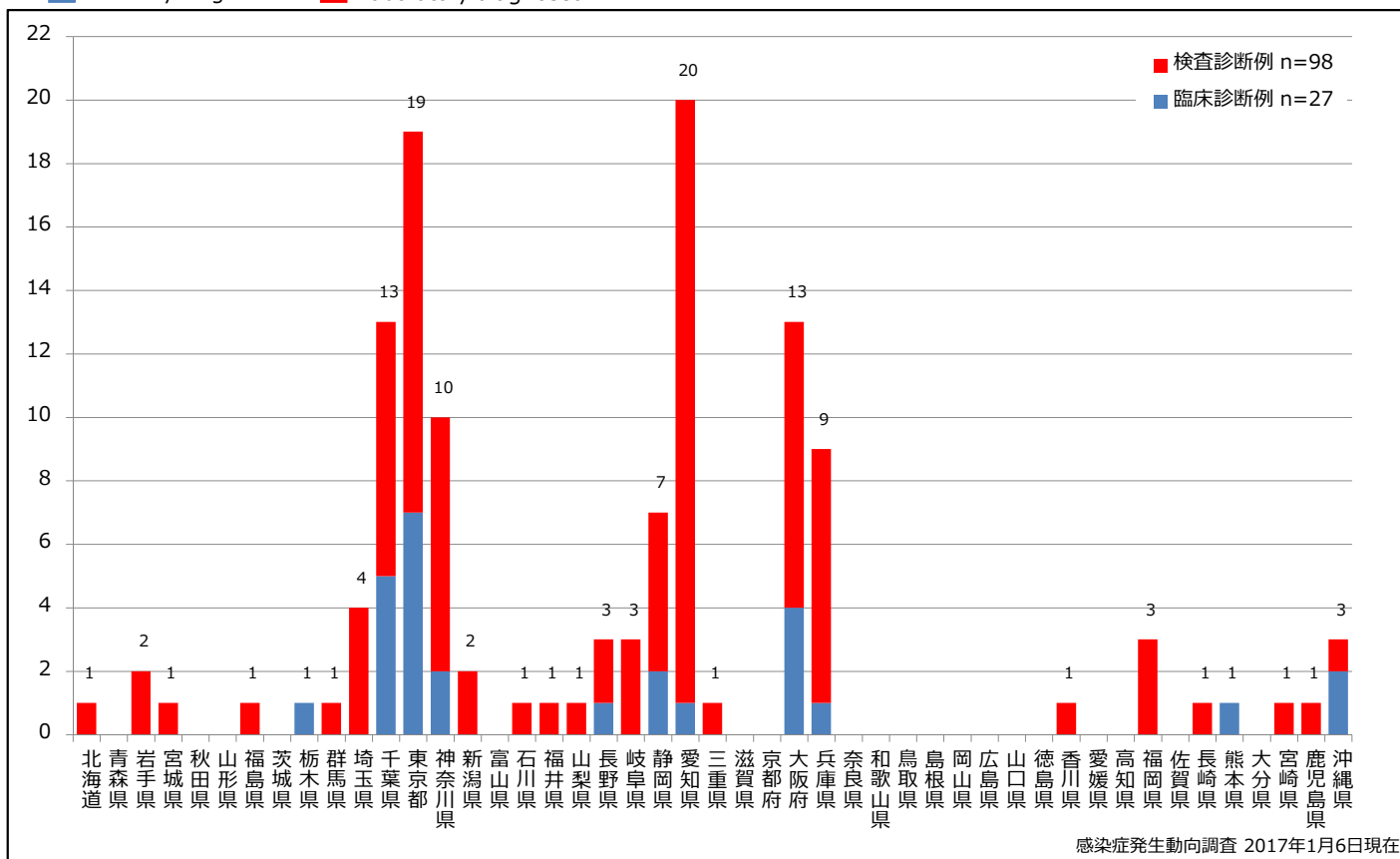
Weekly rubella cases, week 1-52, 2016 (based on diagnosed week as of January 6, 2017)



4. 都道府県別病型別風しん累積報告数 2016年 第1~52週 (n=125)

Cumulative rubella cases by prefecture and methods of diagnosis, week 1-52, 2016 (as of January 6, 2017)

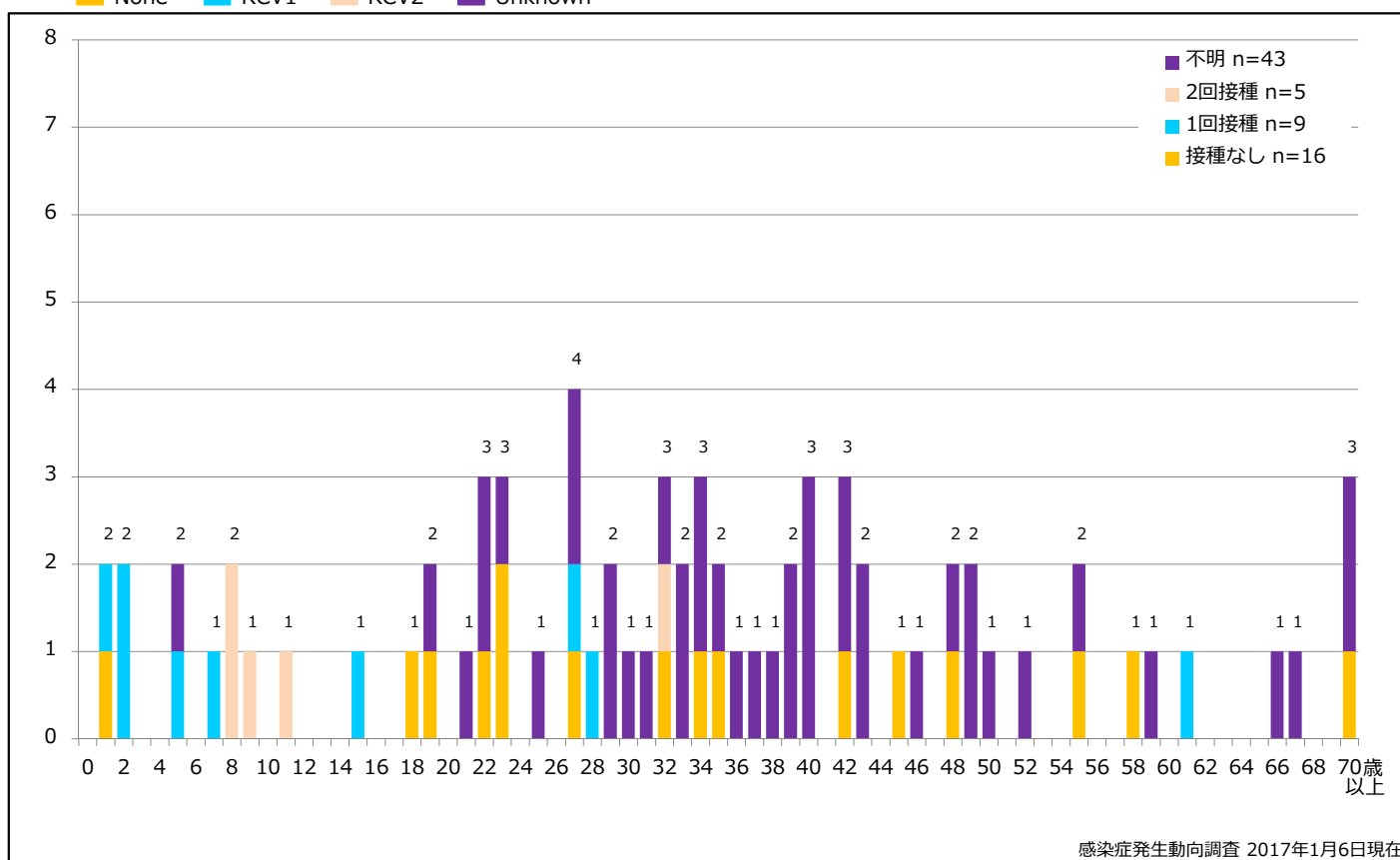
■ Clinically diagnosed ■ Laboratory diagnosed



5-1. 年齢群別接種歴別風しん累積報告数 (男性) 2016年 第1~52週 (n=73)

Cumulative rubella cases (male) by age and vaccinated status, week 1-52, 2016 (as of January 6, 2017)

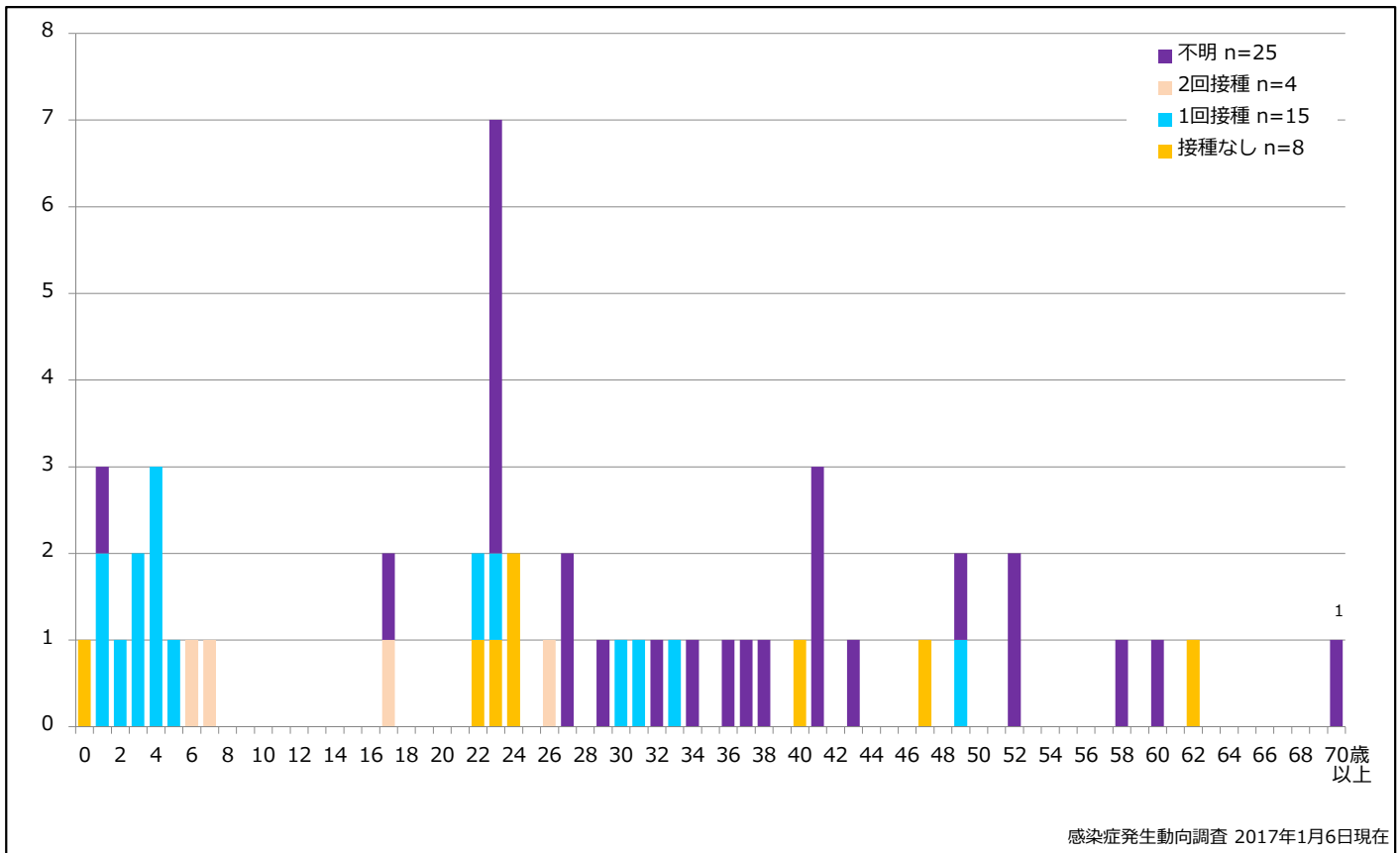
■ None ■ RCV1 ■ RCV2 ■ Unknown



5-2. 年齢群別接種歴別風しん累積報告数 (女性) 2016年 第1~52週 (n=1)

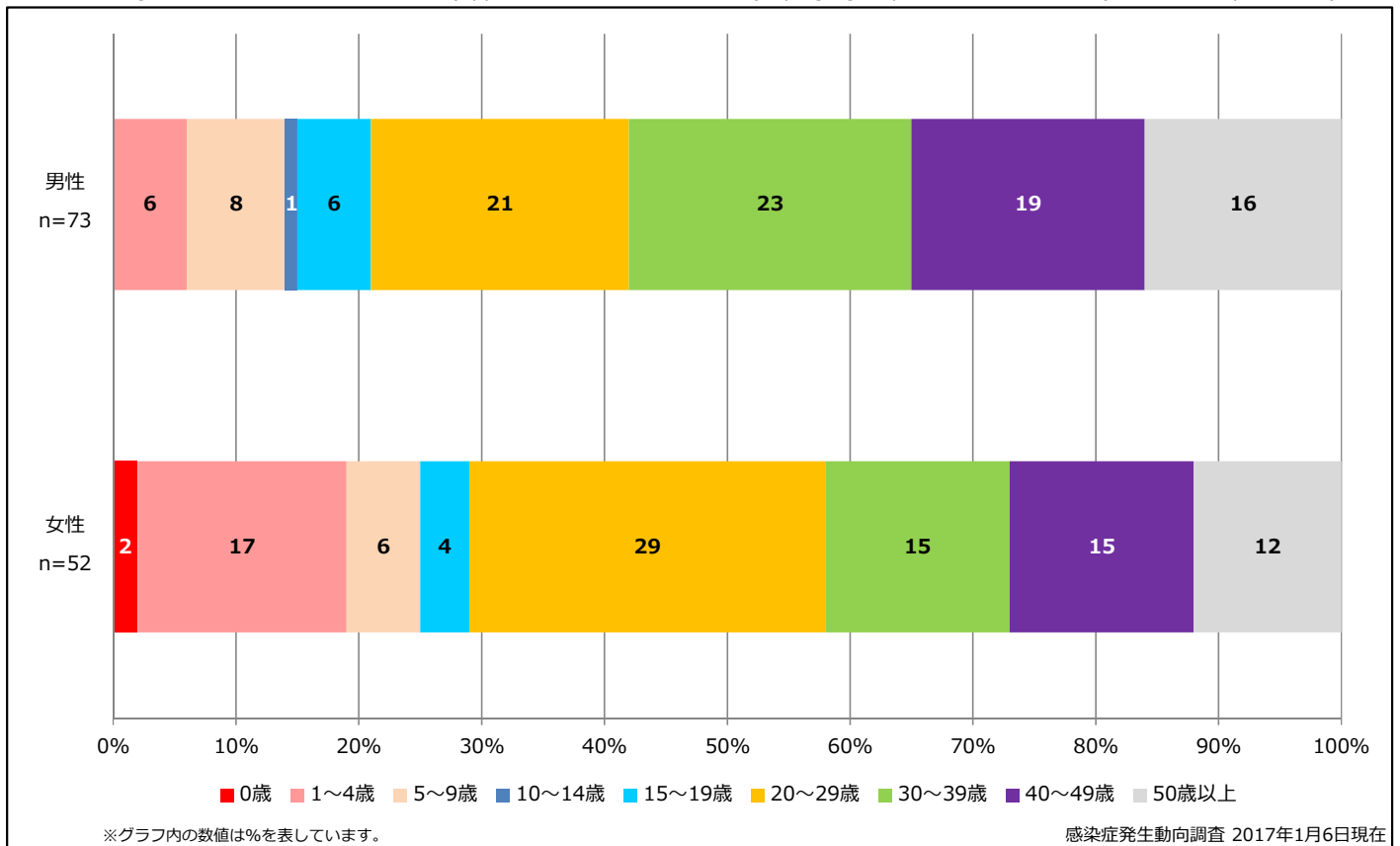
Cumulative rubella cases (female) by age and vaccinated status, week 1-52, 2016 (as of January 6, 2017)

None RCV1 RCV2 Unknown



6. 年齢群別風しん累積報告数割合 (男女別) 2016年 第1~52週 (n=125)

Percentage of cumulative rubella cases (upper: male, bottom: female) by age group, week 1-52, 2016 (as of January 6, 2017)



7. 週別推定感染地域(国内・外)別風しん報告数 2016年 第1~52週 (n=125)

Weekly rubella cases by acquired region, week 1-52, 2016 (based on diagnosed week as of January 6, 2017)

Domestic Imported Unspecified Unknown

