

Local quarantine activities for HRC



This is the picture of Local quarantine activities for High-risk close contact.

4 COVID-19 cases management

Treatment

- ❖ Home Isolation; HI
- ❖ Community Isolation; CI
- ❖ Hospital/ field Hospital /Hospitel

Patient care system was categorized according to the severity of the disease and the risk factors for severe disease.

Statistic of COVID-19 cases in Bangkok and Boundary

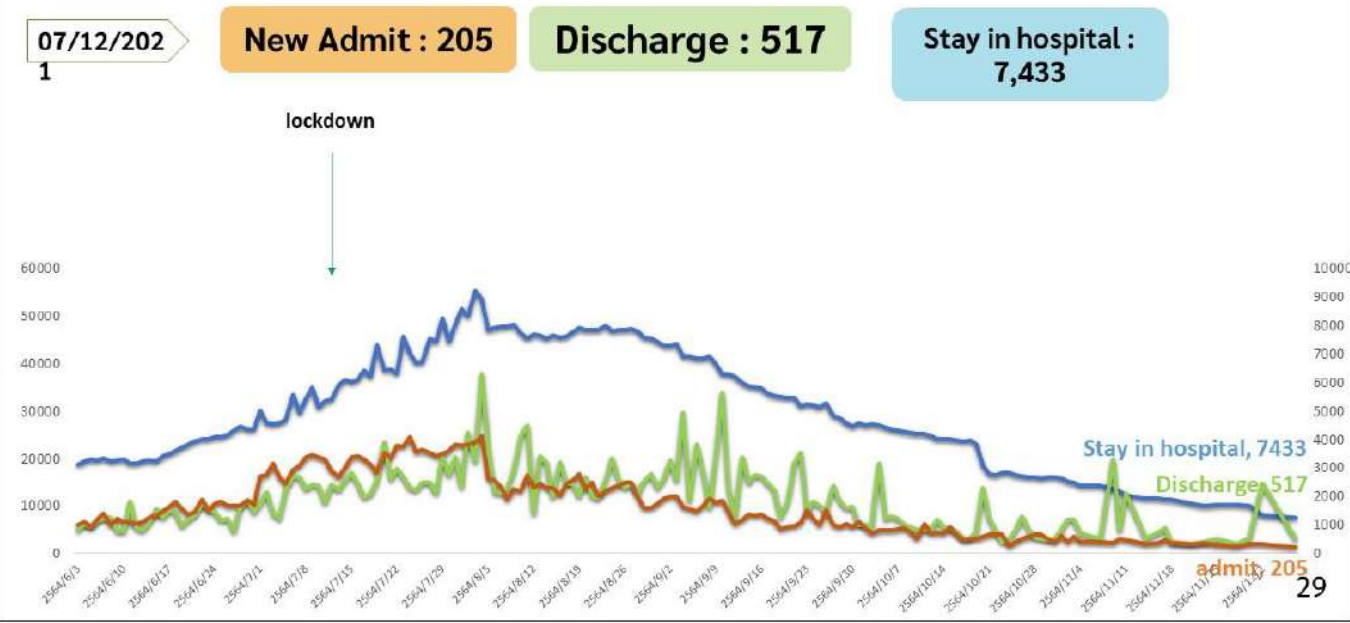
Severity Symptoms Classification

Cases on respirators and death cases



The figure shows the classification of patients according to the severity of the disease. Patient with severe symptoms and mortality tend to be decreased after early testing, and early apply antiviral: Favipiravir in patient with mild symptoms.

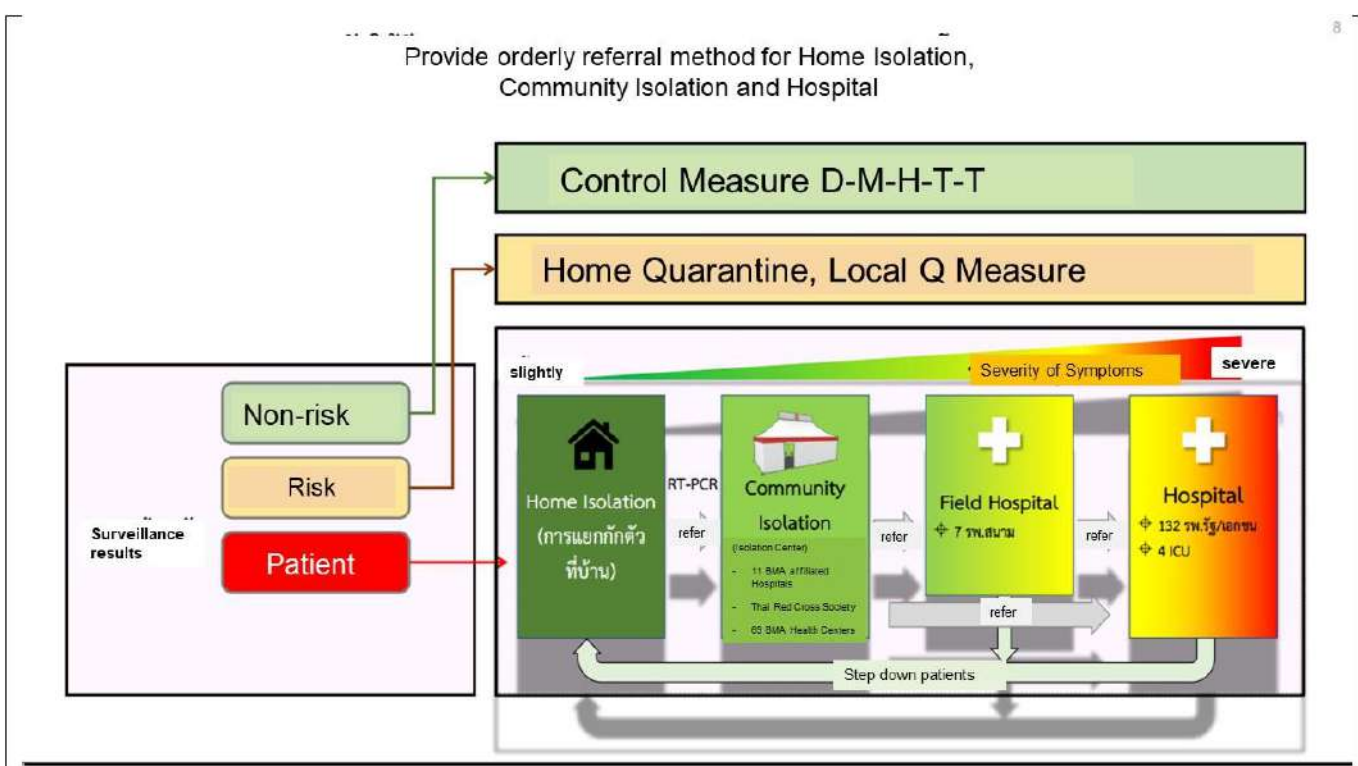
COVID-19 cases management



Bangkok's public health system at the moment is adequate for the patient.



These are the procedure of patient care system.



Bangkok provide referral method for every confirmed cases, categorized by their symptom's severity.

BKK Home Isolation Equipment set

Home Isolation capacity
116,010 patients

Home Isolation Equipment set :
BKK HI CARE kit comprise of

1. Disposable face mask
2. Alcohol- based sanitizer gel/spray
3. Red plastic bags to contain used face mask before dispose
4. Health care guideline (symptoms record)
5. Pulse oximeter
6. Digital Thermometer
7. Herbal Medicine such as Green Chiretta (Fah-Talai-Jone)

32

Bangkok Home Isolation Equipment Set comprise of

- Disposable face mask
- Alcohol- based sanitizer gel/spray
- Red plastic bags to contain used face mask before dispose
- Health care guideline (symptoms memo)
- Pulse oximeter
- Digital Thermometer
- Herbal Medicine such as Green Chiretta (or Fah-Talai-Jone, in Thai)

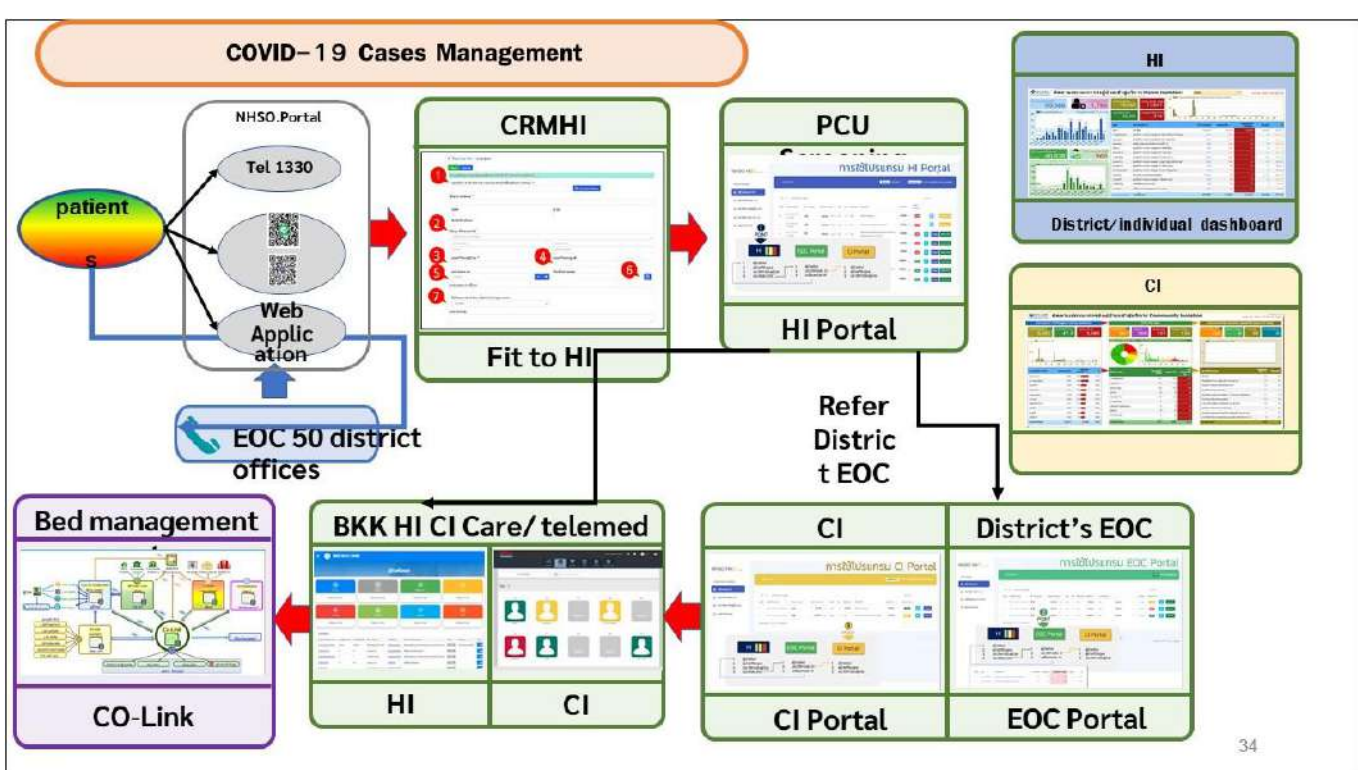
Home Isolation

Food delivery

Bkk home isolation set delivery

33

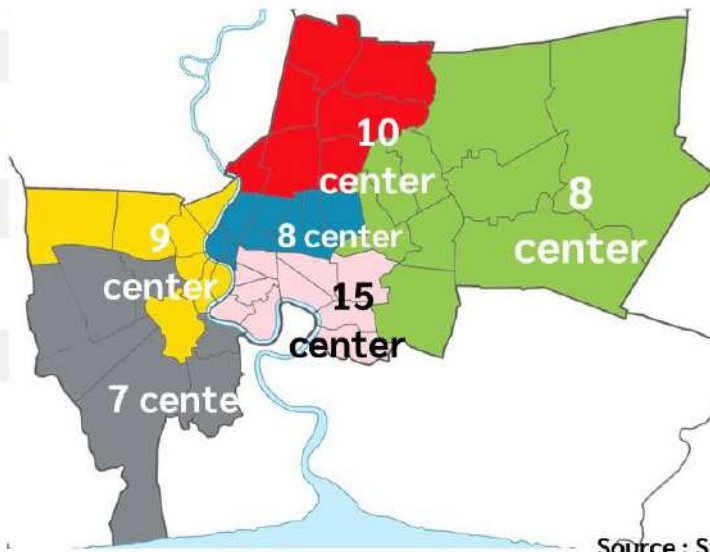
There is voluntary support for medicines and food delivery to the patient in home isolation program.



Bangkok has integrated data collection with all 50 districts.

Community Isolation : CI

1. North Bangkok - 10 center
2. Central Bangkok - 8 center
3. South Bangkok - 15 center
4. East Bangkok - 8 center
5. North Krungthon - 9 center
6. South Krungthon - 7 center



CI 57

Total 7,033

Source : Strategy and Evaluation Department

The Bangkok Metropolitan Administration has established a community care center for those who are unable to stay in their own homes, which are distributed throughout Bangkok.

Information from 08/11/2021

Community Isolation

District Field Hospital

57 Center / 7,033 Bed

8 Hospital 1,660 Bed

In-service
7 Center
1,358 Bed

Standby mode
Ready to operate within 24 hours 32 center 4,015 bed

Standby mode
Ready to operate within 3 Days 18 center 1,660 bed



In-service
3
640 Bed

On Standby mode
5
1020 Bed

87 Occupied-Bed

6946 Bed Available

52 Occupied-Bed

1608 Bed Available

Cumulative-Patient
18,589

5 New Patients

Recovered-Patient 18,502
Recovered : 2

Back home : 2 Referring : 0 Deaths : 0

Cumulative-Patient 4,296

1 New Patient

Recovered-Patient 4,244

Recovered: 2

Back home : 2 Referring : 0 Deaths : 0

3 CI with patient - 54 CI without patient

2 DFH with patient - 6 DFH without patient

30

There is an expansion of field hospitals throughout Bangkok.

5

Disease Prevention

Vaccination

Covid-19 Immunization Program in Bangkok

Vaccine for Student in Bangkok

Vaccine for Bed-Ridden Patient

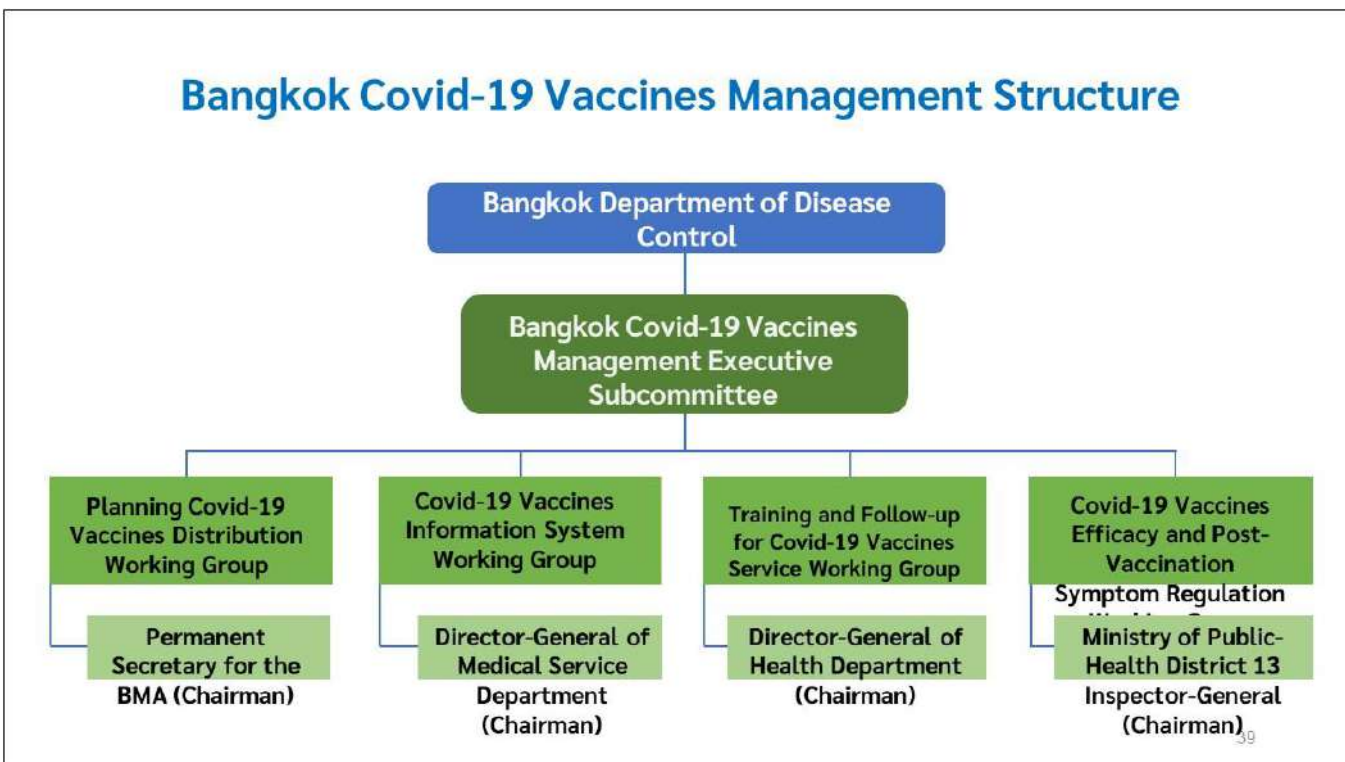
Bangkok Mobile Vaccination Unit : BMV

Vaccination has been accelerated to cover all groups of people. Bangkok also provides vaccination services outside hospitals and mobile vaccination vehicles.

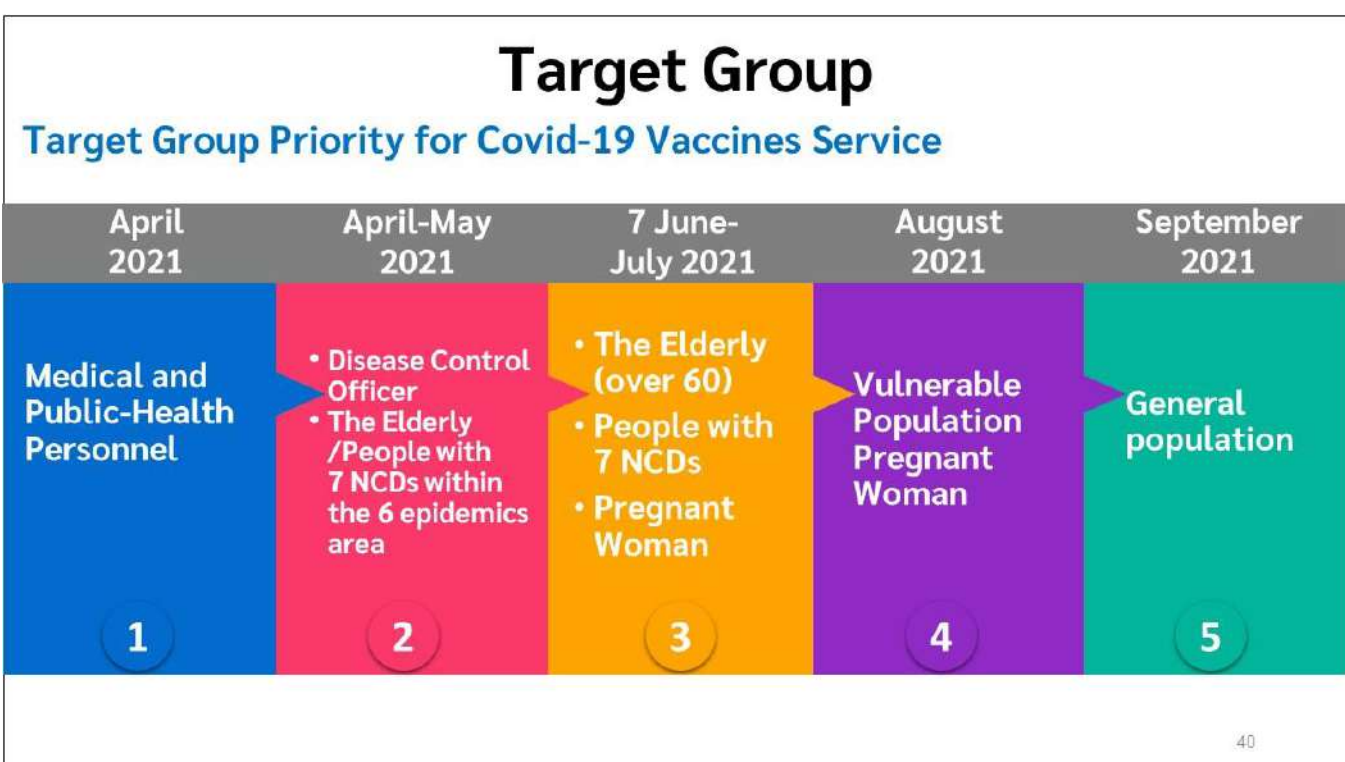
37



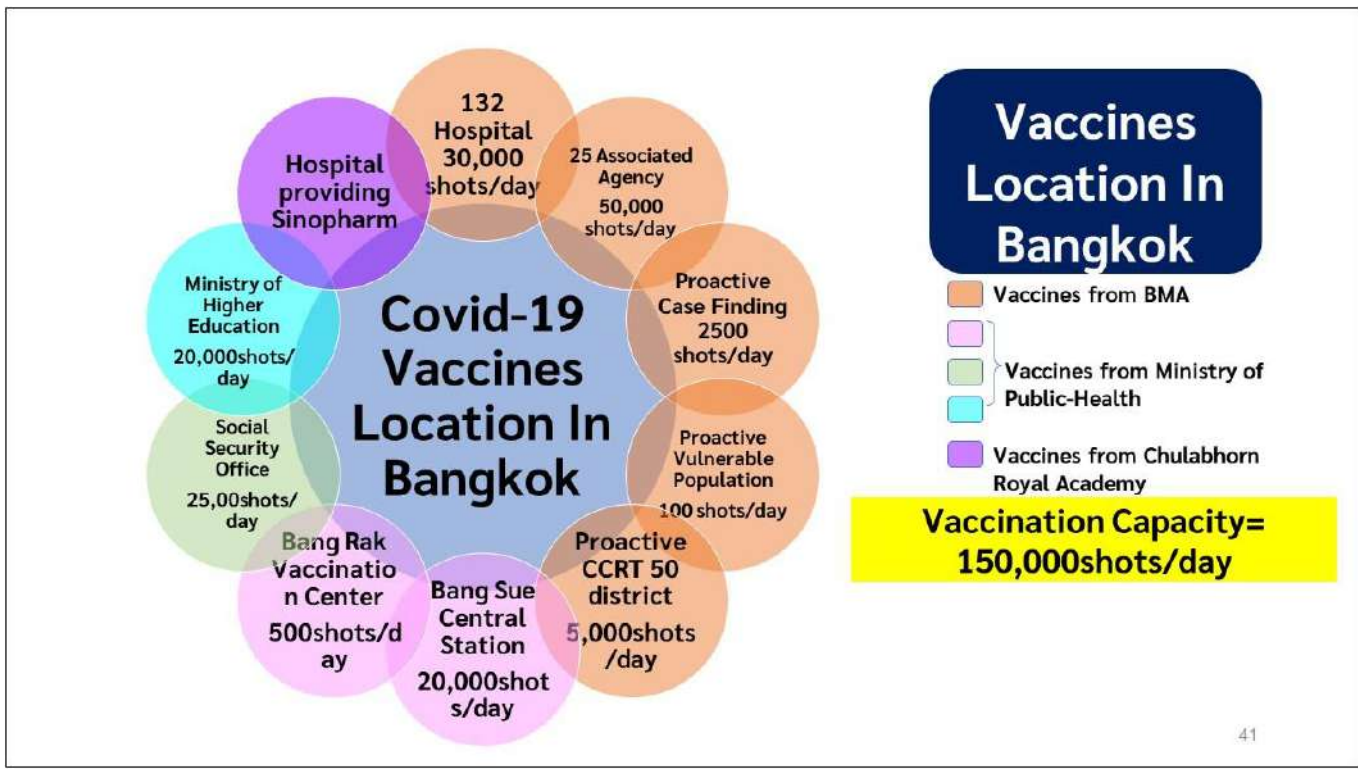
Next, this is about Covid-19 Vaccine Management in Bangkok.



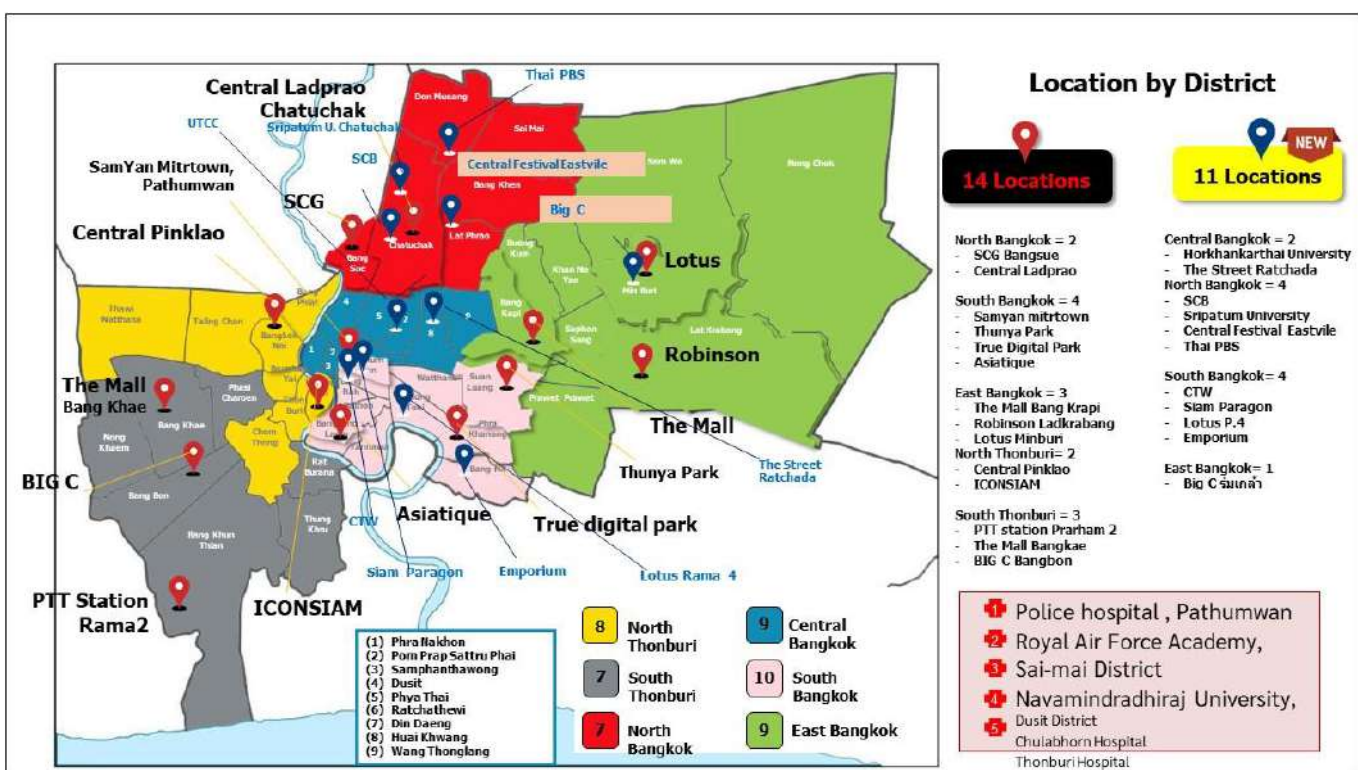
There is a Bangkok Vaccine Committee in charge of planning for vaccine management services according to academic principles to reach its maximum efficiency and cover the population of Bangkok as soon as possible.



As the quantity of vaccines allocated by the Ministry of Health to Bangkok are limited, it is necessary to prioritize target group for vaccine service.



Vaccination Capacity in Bangkok is approximately 150,000 shots per day.



There are vaccination service units distributed throughout Bangkok such as hospitals, market, community mall, bus station and train station.

Covid-19 Vaccination Information 1 December 2021			
Amount of Vaccine	Today +32,707	Total from 7 June 16,902,293	Total from 28 February 18,082,284
1st dose	12,360	8,159,458	9,048,008
Sinovac	1,029	884,364	2,162,843
Sinopharm	211	1,204,033	1,204,099
AstraZeneca	1,926	5,615,969	5,681,066
Pfizer	5,129	455,092	455,095
Moderna	4,065	118,848	118,959
2nd dose	9,368	7,695,235	7,986,588
Sinovac	19	697,483	1,418,217
Sinopharm	588	1,129,242	1,129,246
AstraZeneca	4,868	5,434,424	5,439,125
Pfizer	3,254	434,086	434,089
Moderna	639	19,408	19,408
3rd dose	10,979	1,047,600	1,047,688
Sinopharm	338	12,333	12,333
AstraZeneca	1,244	846,517	846,605
Pfizer	2,452	201,083	201,083
Moderna	6,945	120,532	120,532

First Jab total = 9,048,008 persons or 117.52 Percent

Second Jab total = 7,986,588 persons or 103.73 Percent

Bangkok Total Population = 7,699,174

The results of the vaccination report are shown in Fig. All residents of Bangkok have received at least 2 doses of the vaccine.

Bangkok Total Vaccination 28 February – 1 December 2564

Target Group	Number of People	First Dose			Second Dose			Third Dose		
		Today	Total	Percentage	Today	Total	Percentage	Today	Total	Percentage
Medical Personnel	229,111	11	227,678	99.37	25	221,492	96.67	497	172,641	75.83
Elderly	1,041,828	648	1,100,459	105.63	601	957,115	91.87	761	32,098	2.92
NCDs	1,034,144	550	882,283	85.32	675	797,481	77.12	784	68,173	7.73
Staff	121,119	34	181,085	149.51	21	172,776	101.84	195	66,181	36.55
Normal Population	4,906,057	10,836	6,508,664	132.67	7,628	5,700,042	100.00	8,739	708,089	10.88
≥ 12 weeks Pregnancy	29,724	7	10,643	35.81	15	9,041	30.42	3	301	2.83
Student age between 12-17	458,310	274	137,196	29.94	403	128,641	28.07	-	-	-
Total	7,699,174	12,360	9,048,008	117.52	9,368	7,986,588	103.73	10,979	1,047,688	13.61

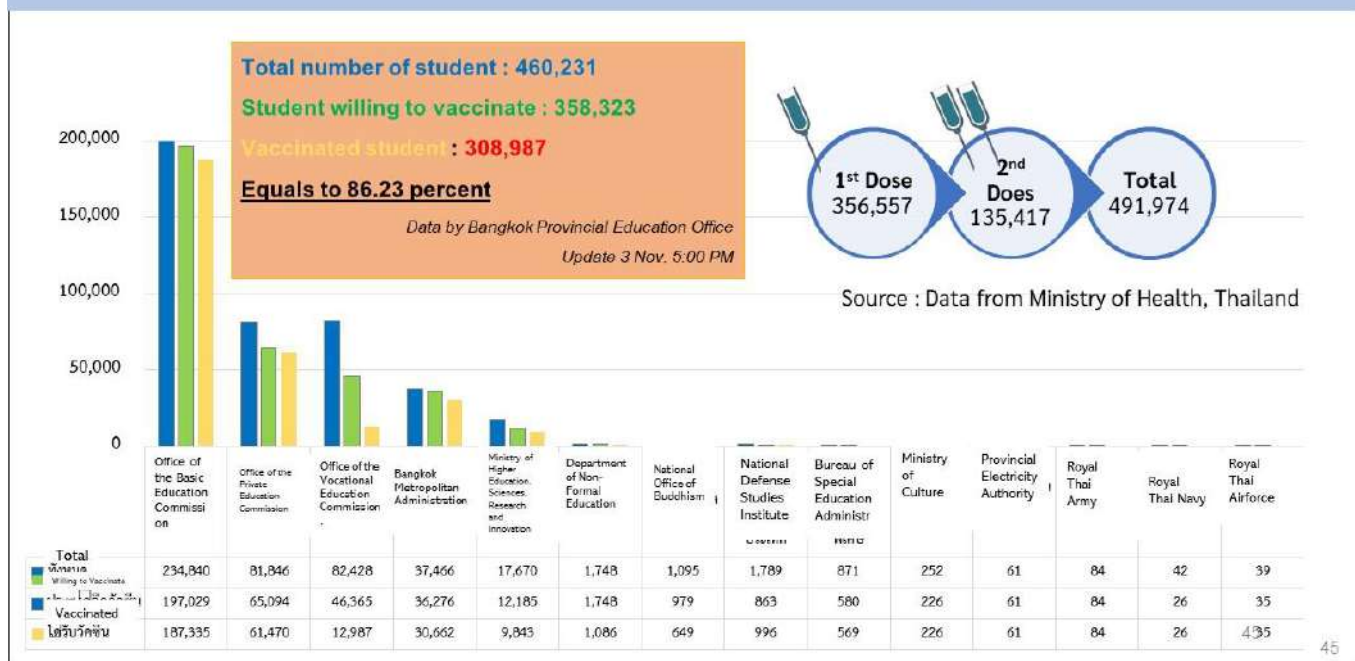
60 (source: Health Security Office) → 1,532,226 dose → First dose 1,100,459 → 71.82%

≥ 12 weeks pregnancy: source from hospital exploration as of 20 Aug 2021
 * Elderly (as in civil registration) 1,041,828 persons
 ** student age between 12-17 years (source from Ministry of Education as of 6 Aug 2021)

Source : Immunization Center , Ministry of Public Health, Thailand

From the analysis of vaccination data according to the risk group of severe disease, it was found that pregnant women, school children and people with chronic diseases have not received any vaccine as expect. It is therefore, a challenge of Bangkok to speed up the provision of vaccines to this group of people as soon as possible.

Bangkok Covid-19 Vaccination in Student Aged 12-17



This figure shows vaccination rate in the students aged between 12-17 years

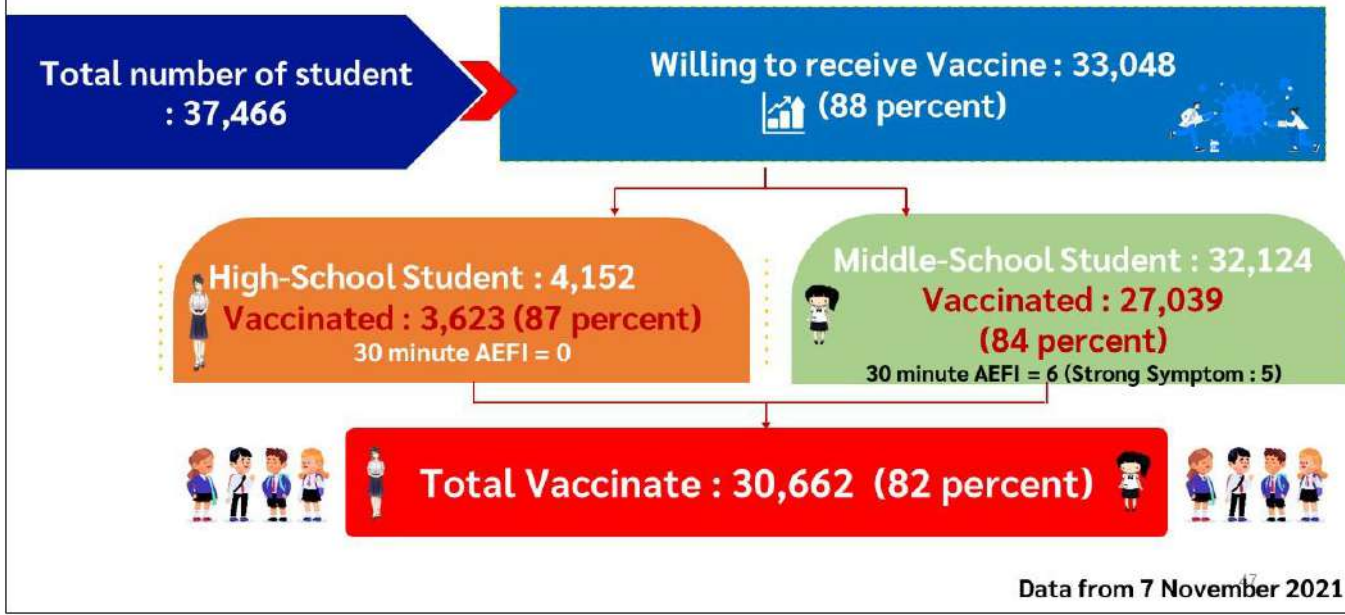
Vaccination (Pfizer) for Student in BMA Affiliated School



Students at Bangkok Affiliated School mostly for apply Pfizer for their 1st dose

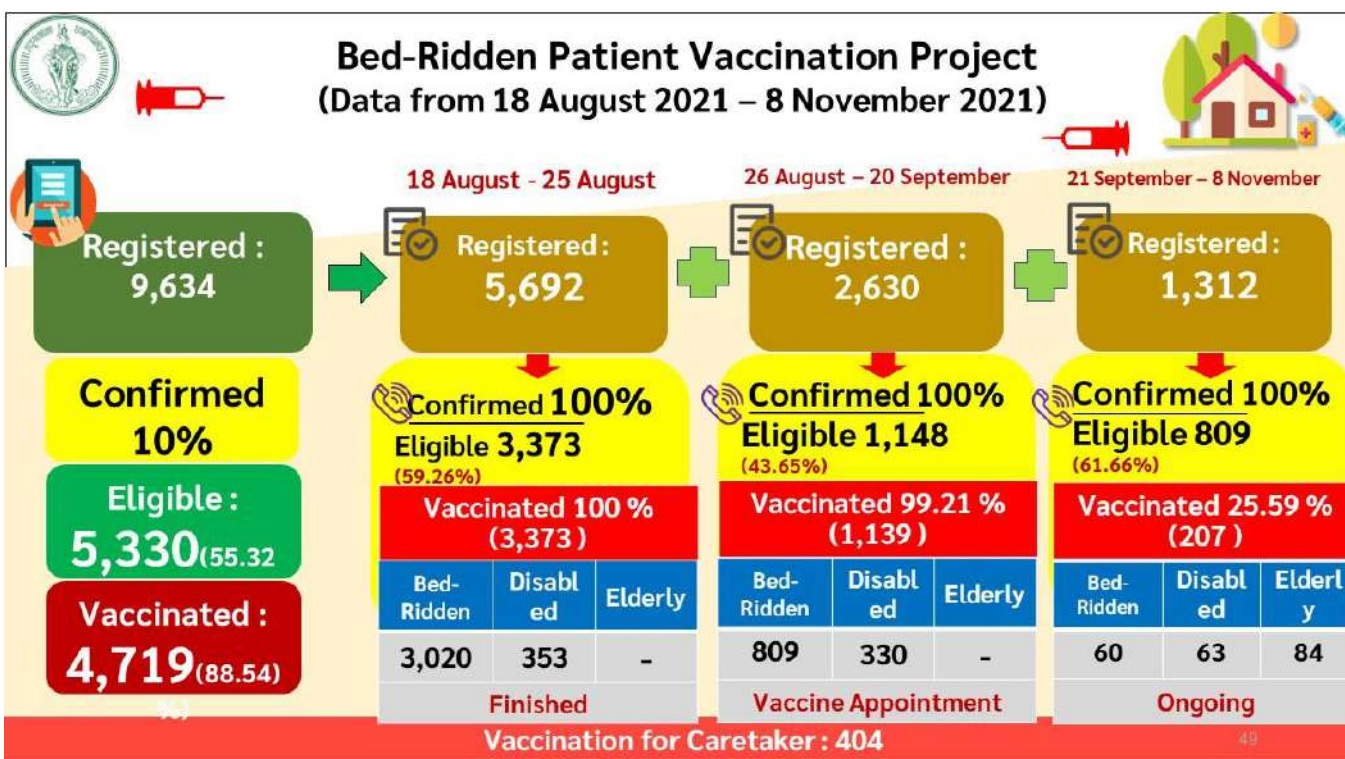
Covid-19 Vaccination in BMA Affiliated Schools

This is the summary of Vaccination in BMA Affiliated Schools

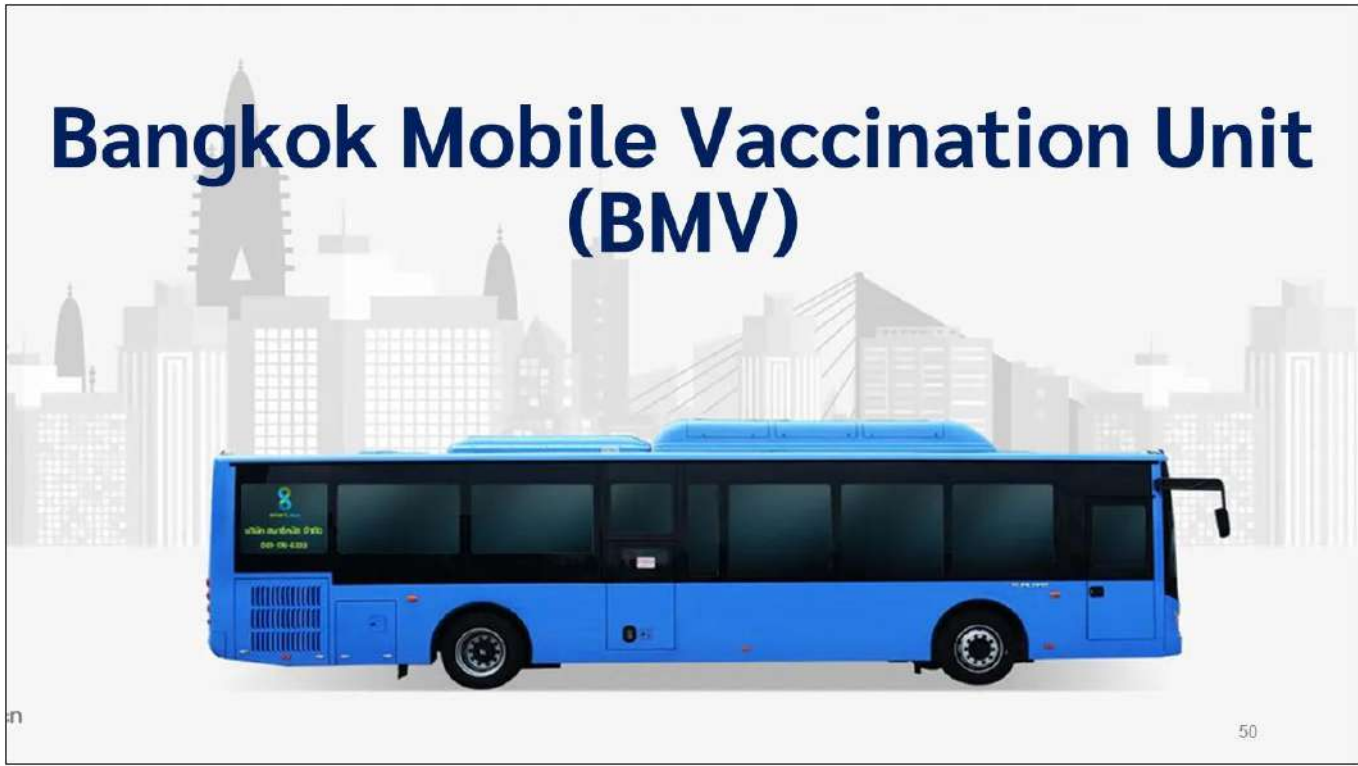


Bed-Ridden Patient Vaccination Project according to Governor's policy

We also provide vaccination service for Bed-Ridden Patient at their resident



This is the summary of Vaccination Project for Bed-Ridden Patient



Mobile vaccination has been arranged to provide more comprehensive services to the people.

Bangkok Mobile Vaccination Unit (BMV)

- Vulnerable Population, The Elderly, Homeless, Pregnant Woman, and Other Target Group : 3109 person
- District Office and Local Public-Health Service Screening, Preparing an Ambulance and Observing Post-Vaccination Symptom

16th Conference on Countermeasures to Combat Infectious Diseases in Asia

51

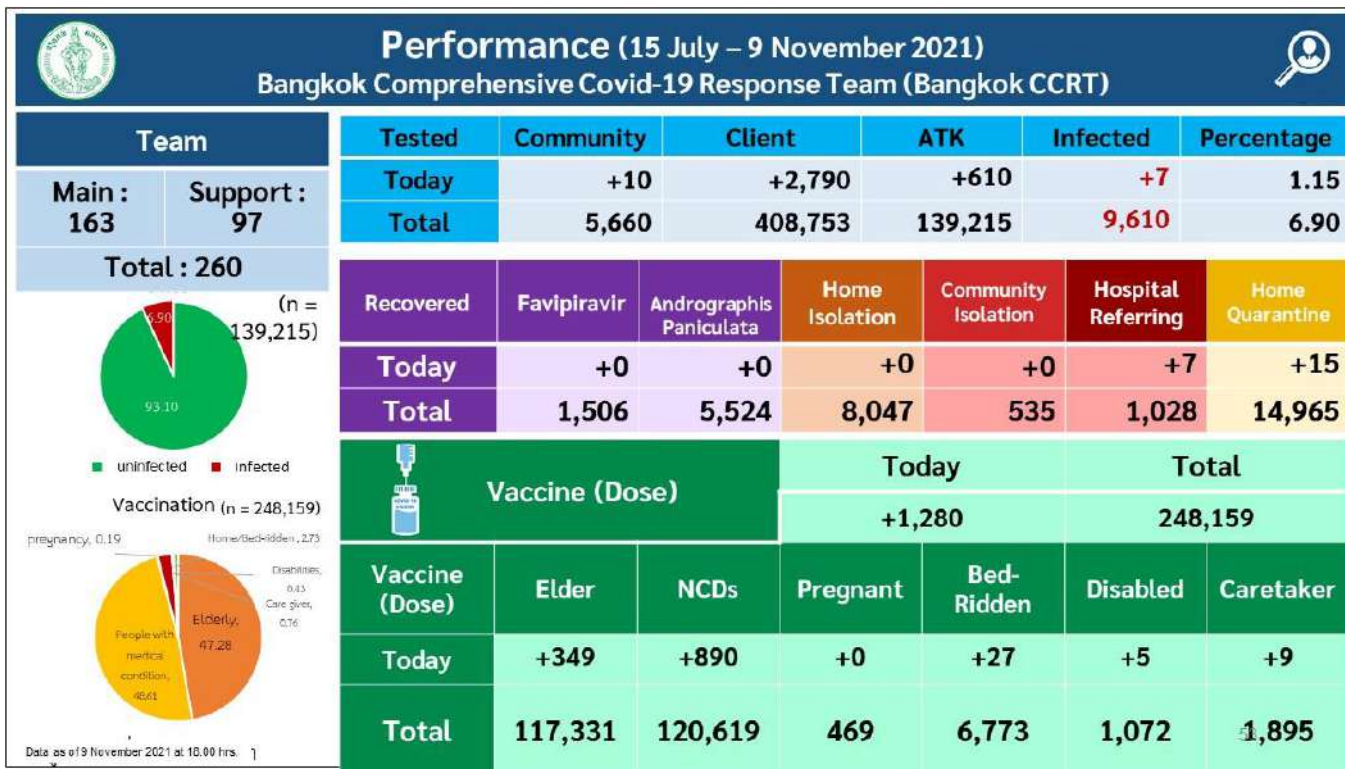
Bangkok also provide Mobile Unit to ensure the inclusive vaccination.

6 Comprehensive Covid-19 Response Team (CCRT)

Bangkok Comprehensive COVID-19 Response Team

Since July 15, 2021

Bangkok Comprehensive COVID-19 Response Team (or CCRT) has been established to locate patients in the community, screening and providing one-stop vaccination services in all 50 districts simultaneously starting in July 2021.



This is the result of our attempt the fight against COVID -19 outbreak.



Our key success factors comprise of Effective Management Structure, Clear Operating Guidelines and Cooperation from public, private and population.



Plan for reopening Bangkok to the tourists was initiated in November 2021.